

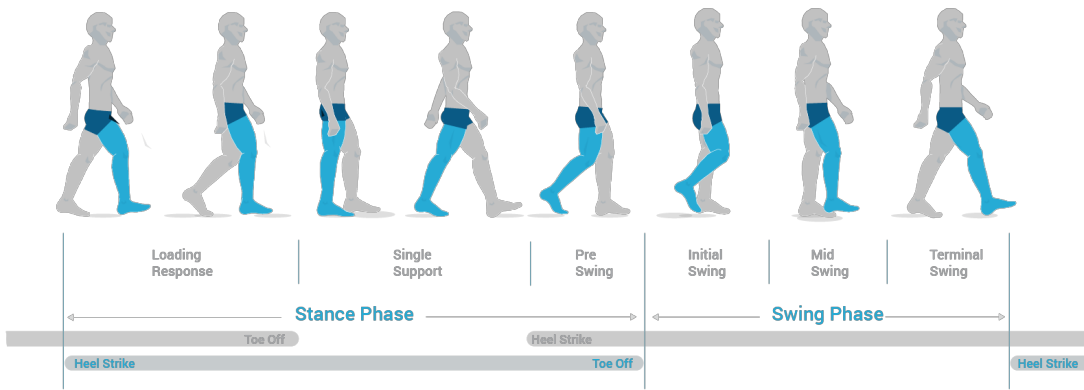
Noraxon Gait Line & 10 Zone Analysis Report

Patient
Project
Last Name
First Name

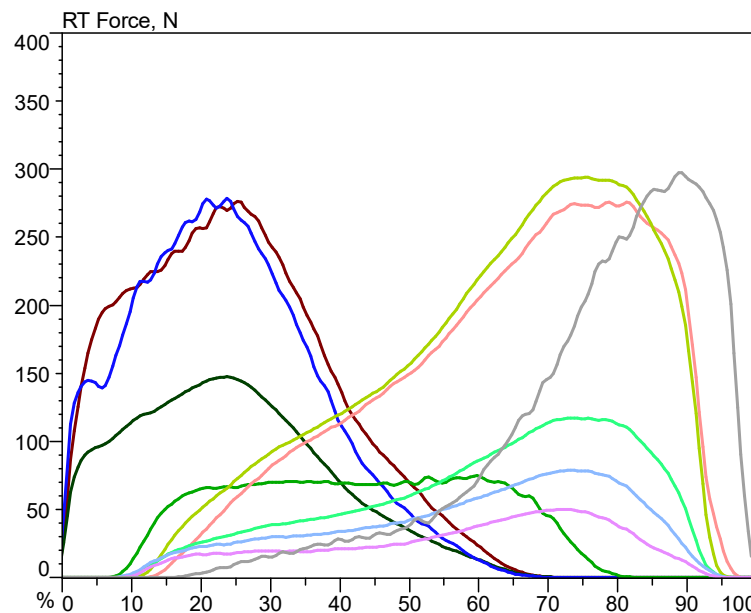
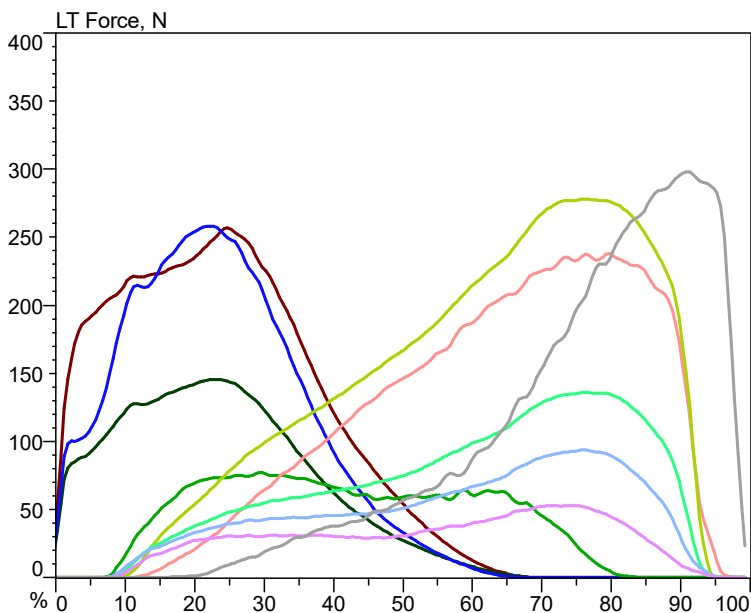
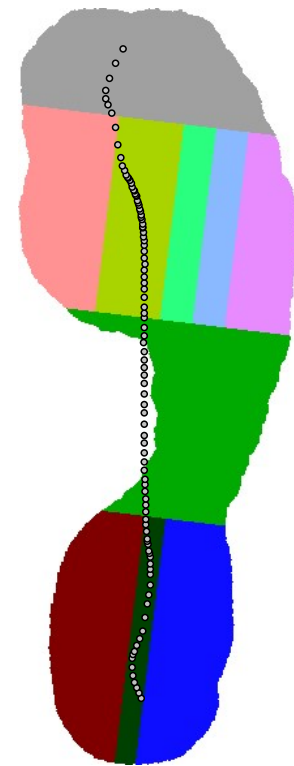
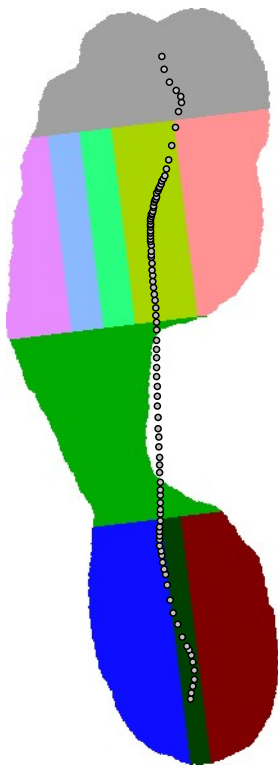
Official Demo Records
MyoMetrics Demo Record
Demo Record - Default Set

Record

Date Measured 6/23/2015 09:45
Number of periods 10



Stance phase, %	Left	57.5±1.4	
	Right	58.2±1.1	
	Diff, %	1.1	
Load response, %	Left	7.9±1.1	
	Right	7.5±1.4	
	Diff, %	-4.4	
Single support, %	Left	41.8±1.2	
	Right	42.7±1.3	
	Diff, %	2.1	
Pre-swing, %	Left	7.8±1.5	
	Right	7.9±1.1	
	Diff, %	1.2	



Noraxon Gait Line & 10 Zone Analysis Report



Patient
Project
Last Name
First Name

Official Demo Records
MyoMetrics Demo Record
Demo Record - Default Set

Record

Date Measured
Number of periods

6/23/2015 09:45
10



Peak force, N	HM	256.9	
	HC	145.5	
	HL	258.2	
	MF	77.0	
	M1	237.8	
	M2	277.9	
	M3	136.1	
	M4	93.6	
	M5	52.6	
	T	297.8	
Start, %	HM	0.0	
	HC	0.0	
	HL	0.0	
	MF	9.0	
	M1	14.5	
	M2	11.5	
	M3	10.0	
	M4	9.5	
	M5	10.5	
	T	22.5	
End, %	HM	64.5	
	HC	63.5	
	HL	62.5	
	MF	80.5	
	M1	96.5	
	M2	95.0	
	M3	94.0	
	M4	94.5	
	M5	93.5	
	T	100.0	
Duration, %	HM	64.5	
	HC	63.5	
	HL	62.5	
	MF	71.5	
	M1	82.0	
	M2	83.5	
	M3	84.0	
	M4	85.0	
	M5	83.0	
	T	77.5	
Peak time, %	HM	25.3	
	HC	23.8	
	HL	22.8	
	MF	29.8	
	M1	80.3	
	M2	76.8	
	M3	76.8	
	M4	76.3	
	M5	71.8	
	T	91.8	
Impulse, %	HM	53.6	
	HL	46.4	
Impulse, %	M1	29.2	
	M2	35.2	
	M3	17.0	
	M4	11.7	
	M5	7.0	

Peak force, N	HM	276.5	
	HC	147.5	
	HL	278.7	
	MF	74.9	
	M1	275.5	
	M2	294.0	
	M3	117.3	
	M4	78.9	
	M5	50.1	
	T	297.4	
Start, %	HM	0.0	
	HC	0.0	
	HL	0.0	
	MF	9.0	
	M1	14.5	
	M2	12.5	
	M3	12.0	
	M4	11.0	
	M5	12.0	
	T	21.5	
End, %	HM	66.5	
	HC	65.5	
	HL	65.0	
	MF	79.5	
	M1	97.0	
	M2	95.5	
	M3	94.0	
	M4	94.0	
	M5	93.0	
	T	100.0	
Duration, %	HM	66.5	
	HC	65.5	
	HL	65.0	
	MF	70.5	
	M1	82.5	
	M2	83.0	
	M3	82.0	
	M4	83.0	
	M5	81.0	
	T	78.5	
Peak time, %	HM	25.8	
	HC	24.3	
	HL	24.3	
	MF	60.3	
	M1	79.3	
	M2	75.8	
	M3	73.8	
	M4	73.8	
	M5	73.3	
	T	89.3	
Impulse, %	HM	52.2	
	HL	47.8	
Impulse, %	M1	34.3	
	M2	36.2	
	M3	14.0	
	M4	9.5	
	M5	5.9	

