

STEP 1: Home/Start Screen

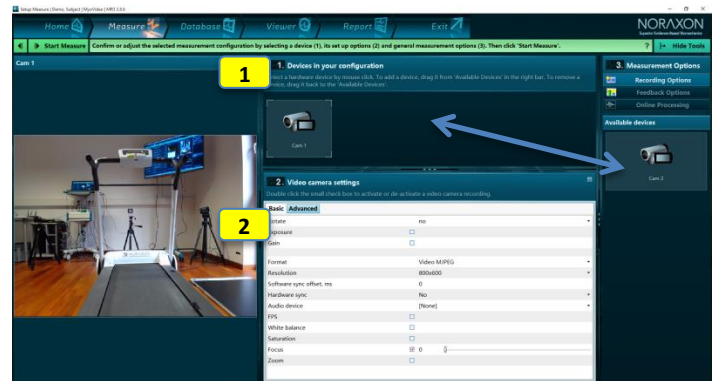
- 1** Select the module myoVIDEO
 - Select myoVIDEO from the main menu
- 2** Select/create a subject
 - Enter Subject Name and other subject properties
- 3** Select Edit or New Configuration
 - Edit will re-enter an already existing configuration
 - New will allow to create a new configuration
 - If you mark a configuration from the list and hit the green Measure button you will directly enter the Measure Menu



STEP 2: Create or edit a measurement configuration

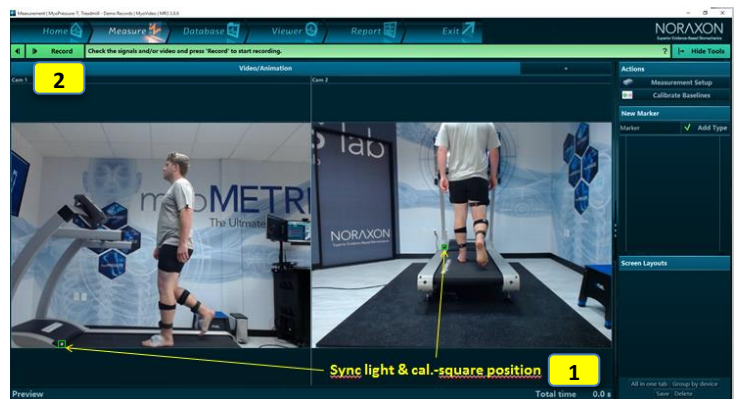
- 1** Insert Cameras into the configuration
 - Drag the device icon from the right tool bar to the configuration window.
- 2** Configure the camera
 - The recommended camera model (typically Logitech or Optitrack for HS recording) are automatically pre-configured. Make sure that the video format is MJPEG compressed.
 - If several cameras are used together with the MyoSync system, make sure that the green calibration square is positioned around the LED light visible within the video.
 - If marker auto-tracking is used set Exposure at low value (move slider to the right side quarter of scale) and compensate picture darkness/brightness with the Gain slider.

Continue with



STEP 3: Measure & Store Recording

- 1** Check & confirm the sync-light arrangement
 - Make sure that sync-light calibration frame is positioned correctly
- 2** Click on Record & Stop to start/stop the measurement



- 3** Enter a record name and save the recording
 - Save & View will save the record and move to record viewer to review it,
 - Save & measure will immediately go back to measure and,
 - Discard & measure will delete the record and return back to measurement



STEP 4: Viewer

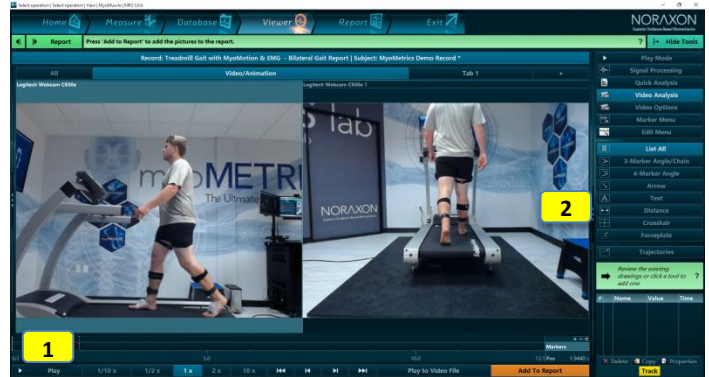
1 **Replay the record**

- Use video play buttons below the time line

2 **Use Video analysis tools**

- Click on **Video Analysis** to access to several angle drawing tools, text editor, distance measure tool and other video drawing tools.
- **Force Plate** requires the integration of 3D force plates into the recording and visualizes the ground reaction force vector overlaid to the video image.
- **Trajectories** are meant to be used for auto-tracked markers (see below).

Continue with

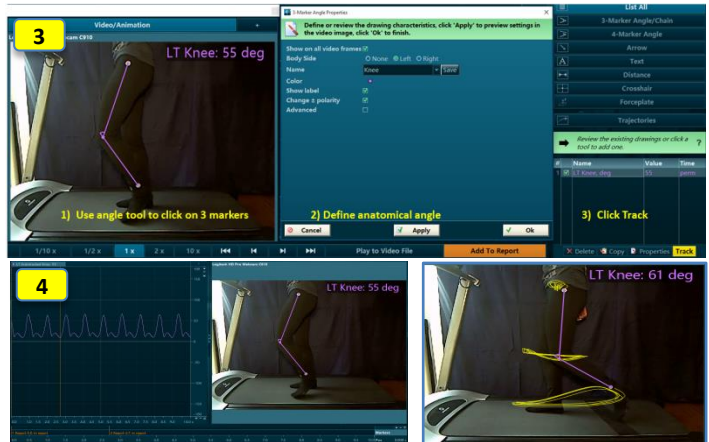


3 **Option: Create auto tracked angles based on illuminated markers**

- myoVIDEO is equipped with an LED flood light and reflective markers which can be used to automatically track angles.
- Draw & define an angle at the beginning of the record and click **Track** to auto-track it throughout the record.
- A new angle channels (see 4) is created based on tracked marker and can be used for dynamic angle analysis.

4 **Option: Review: Auto angles and display motion trajectories**

- If angles are successfully tracked, an angle signal will be shown as a curve.
- Once an angle is successfully tracked and visible as a curve, trajectories of each angle markers can be turned on by clicking on **Trajectories**.



STEP 5: Start MyoVideo report

1 **Select POI report in tab MyoVideo Reports**

- myoVIDEO is equipped with a point of interest (POI) based report.

Click on **OK** to enter the Report channel selection sub step

2 **Option: Select channels**

- Pure video recordings will not contain measurement channels. Only in case angle were auto-tracked or additional devices like EMG are measured as well, the channel selection step will show measurement channels which can be specifically selected or excluded here

3 **Select Points of interest**

- Replay the video and whenever you want to add a picture and its drawings/angles, stop video at any interesting position, click on the **Add to Report** button below time line.
- You can add as many POIs as you like, they will automatically be included to the video report. Each POI will be indicated with an orange marker above time line.

Click on **Next** to continue to go to the analysis report



STEP 6: Read and print/export a report

1 **Scroll through the report results**

2 **Use Print, View or Analysis Options**

- Reports can be printed, copied to clipboard or exported to several files formats.
- The report can be Re-analyzed to adjust channel selection or the period definition.
- The report can be compared to another record/report of same record format.
- Averaged angle signals can be stored as time normalized curves in normative or group data.

Click on **Home** to go back to home screen or click **Measure** in the **Top navigation bar** to directly measure with the same measurement configuration

