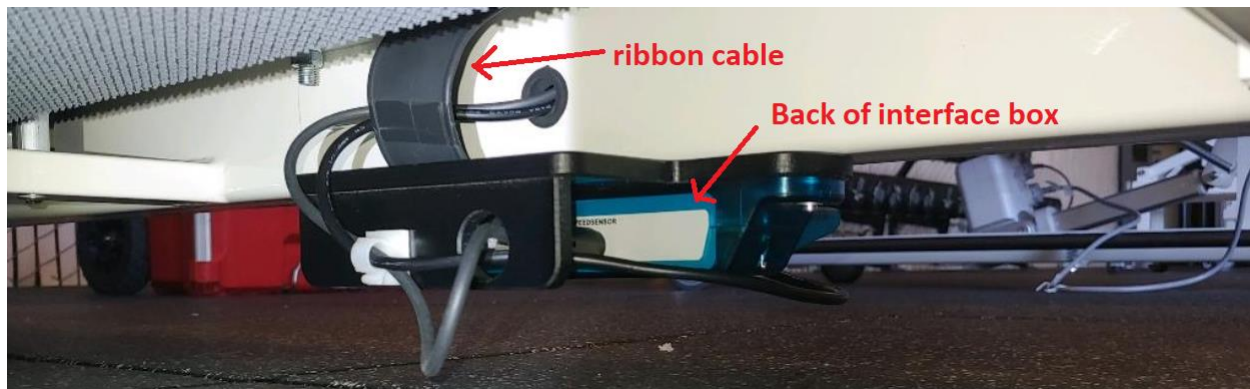


2 Installation onto Treadmill

The Zebris interface box is installed underneath the treadmill frame on the back right-hand side if you are walking forward on the treadmill.

The ribbon cable on the back of the interface box must be plugged into the connection underneath the treadmill.

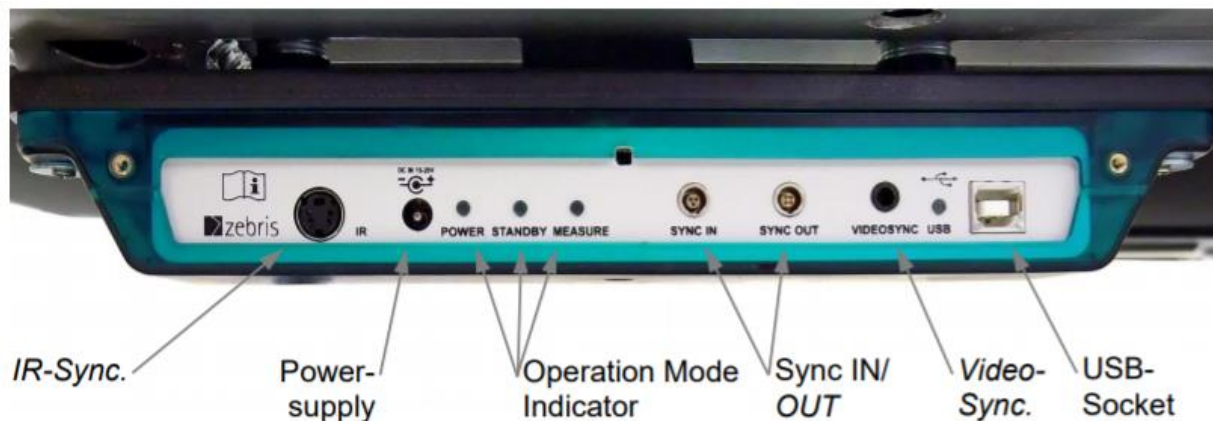
Note: Be very careful not to twist or pull the ribbon cable, as doing so may damage the connections.



3 Setup of System

In order to set the FDM-T platform into operation, the power supply unit, the USB type A-B cable, and 700C sync cable must be connected to the platform according to the diagram below.

The A-end of the USB cable plugs into the PC and the 3.5 mm stereo end of the sync cable plugs into the Noraxon MyoSync Master Station.



Note: The 700C sync cable must be plugged into the 'sync in' port on the interface box.

4 Installing the Companion Software - myoResearch™ 3

To utilize the full functionality of the FDM-T instrumented treadmill system, ensure the system has updated drivers. Noraxon's *myoResearch 3* needs to be installed on the computer.

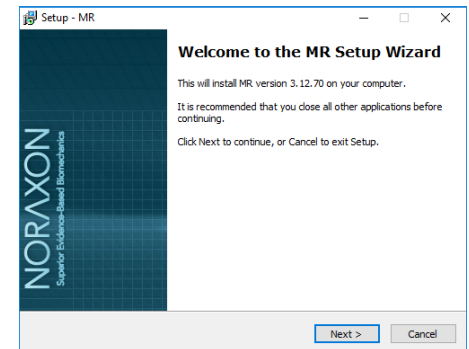
Note: Please be sure Noraxon MR3 software is downloaded to the PC before plugging the Interface Box to the PC. The Windows operating system registers the location of the driver on the hard disc when the FDM-T platform and PC are connected for the first time.

If at this time there is no compatible software installed, the driver may fail. If this happens, unplug the FDM-T platform, restart your computer, then install the software before plugging the FDM-T platform back in.

Software Installation

Within the package the myoMOTION System was shipped in, there is a USB flash drive containing the latest *myoResearch 3* software.

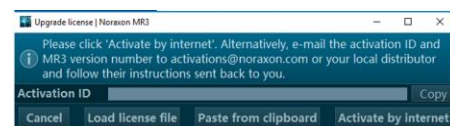
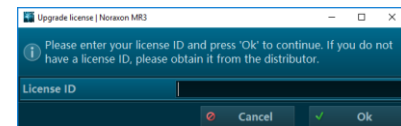
1. Insert the MR3 USB flash drive into the PC
2. A menu will automatically pop up
3. Click on the Noraxon installation file and follow the Wizard's instructions



Activating the Software

The installed companion software must be *activated* before unrestricted use is possible.

1. Open MR3
2. A dialog box will indicate how many more times MR3 can be opened
3. Click on "Activate"
4. Enter the License ID provided on your USB flash drive and press "OK"
5. If you have an internet connection, click Activate by Internet for immediate activation
6. Alternatively, email the provided activation ID to activation@Noraxon.com. Noraxon Support will email or respond by phone with the Activation Code. Enter the provided Activation Code to remove any restrictions on use.



5 Troubleshooting

5.1 How to switch the platform On/Off

The platform is switched on and off by the software control as soon as the Noraxon software on the PC is started or shut down. If the device has been connected correctly, the green LED operation mode indicator illuminates on the interface box.

5.2 LED indicators on the interface box

POWER	The power LED will be illuminated as soon as the power supply unit is plugged to the interface box and connected to mains.
STANDBY	Standby will be illuminated if the power supply unit is connected to mains, the USB socket is connected to the PC and the hardware driver of the platform is properly installed.
MEASURE	The measure LED will be illuminated during the measurement.
USB	This LED will be illuminated when the USB socket is connected to the PC and the hardware driver of the platform is properly installed.

5.3 Sync

The 'Sync in' is the standard solution for synchronizing the FDM-T system with other Noraxon devices. Connect the 700C sync cable to the 'Sync in' port.

The 'IR,' 'Sync out,' and 'Videosync' ports are not used.