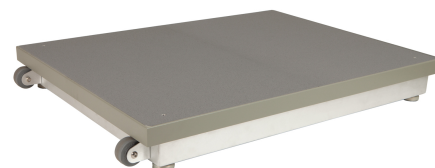




ACCUPOWER SPECIFICATIONS

The AccuPower is AMTI's portable solution for jumping and power analysis. It uses Hall Effect sensors to accurately measure ground reaction forces while allowing for internal amplification and high overload protection on all axes. The AccuPower interfaces directly with a computer via a convenient USB or RS-232 connection and comes bundled with the powerful [AccuPower Software](#).



Units: Capacity:

Dimensions(WxLxH)	40 x 30 x 4.9 "	Mounting hardware	Not Required
Weight	50 lb.	Sensing elements	Hall Effect
Channels	Fx, Fy, Fz, Mx, My, Mz	Amplifier	Built-in
Top plate material	Composite	Analog outputs	8 Channels
Temperature range	0 to 125°F	Digital outputs	6 Channels

Channel	Fx	Fy	Fz	Units	Mx	My	Mz	Units
Capacity	1000	1000	2000	lb	25000	25000	10000	in-lb
Sensitivity	-	-	-	µv/v-lb	-	-	-	µv/v-in-lb
Natural frequency	-	-	-	Hz	-	-	-	Hz

Published specifications subject to change without notice.

Last modified:2014-11-16

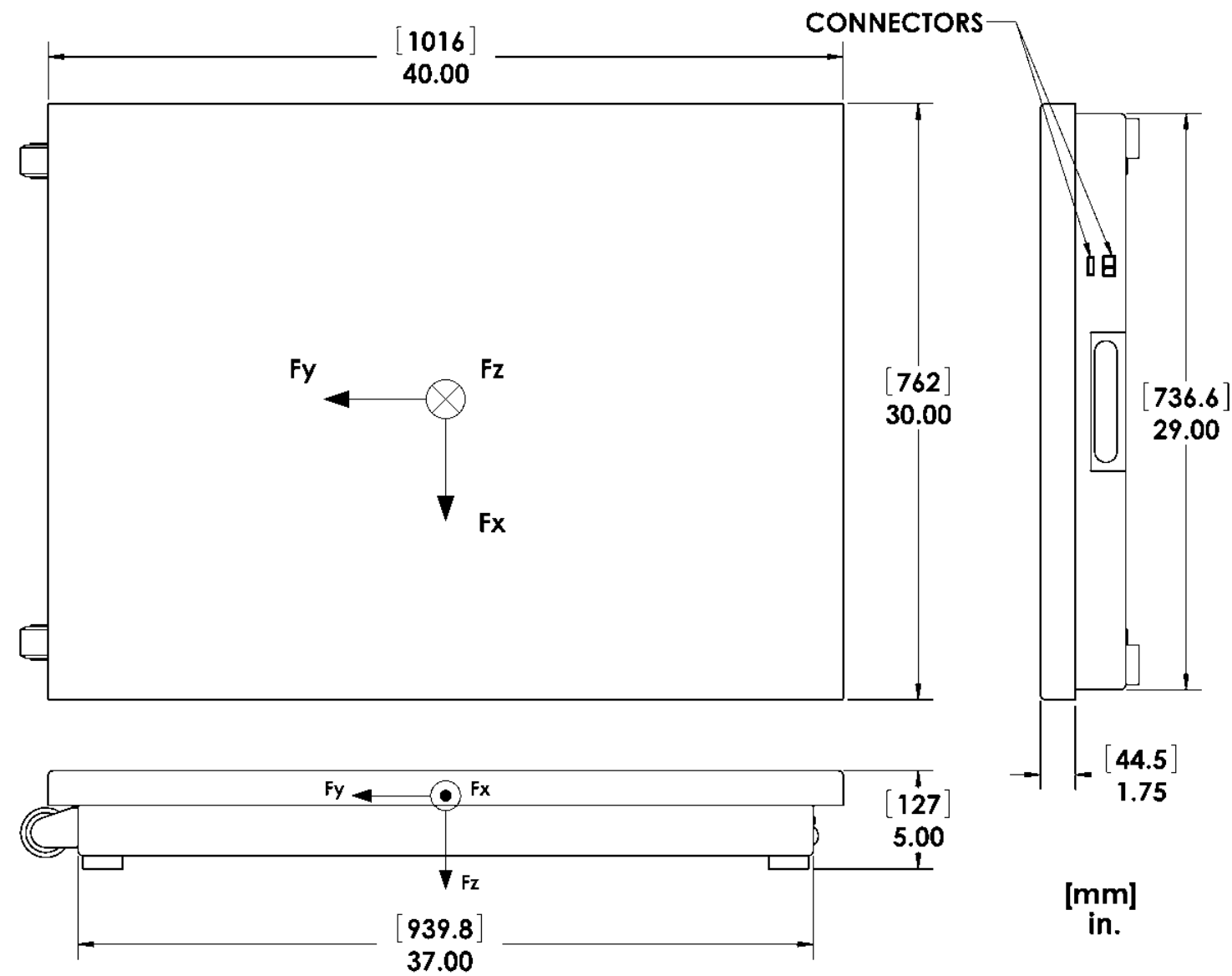
TECHNICAL DRAWINGS

Footprint Drawing (click on image to enlarge)

Electrical Drawing

TECHNICAL DRAWING

Footprint Drawing



Electrical Drawing

No electrical schematic currently in the database

© Advanced Mechanical Technology, Inc.
176 Waltham Street, Watertown, MA 02472-4800 USA
1-617-926-6700