

# MR3 to MR4 Upgrade Guide

*Attention: Before Upgrading to MR4 from any version of MR3 or MR4, ensure you have a backup of your data, and that there is plenty of space on your PC to import your database, or create an external database location on an external hard drive to store your data in Step 1.*

*Data is not compatible between MR3 and MR4. Data stored in MR4 cannot be imported back into MR3.*

*There is no loss of data when transferring databases, protocols, or custom reports from MR3 to MR4*

## Table of Contents

<b>Database Transfer</b> .....	<b>2</b>
Step 1: Creating an External Database Location (optional) .....	2
Step 2: Importing data from MR3 .....	3
<b>Configurations/Protocols Transfer</b> .....	<b>4</b>
Step 1: Exporting configurations from MR3.....	4
Step 2: Importing configurations as Protocols into MR4 .....	5
<b>Custom Reports Transfer</b> .....	<b>7</b>
Step 1: Exporting Custom Reports from MR3 .....	7
Step 2: Importing Custom Reports into MR4.....	8

## Database Transfer


Refer to the document, *MR3 Data Backup and Management* or *MR4 Data Backup, Management, and Sharing* for more details on creating a complete backup of your subject Database before proceeding to the next steps.

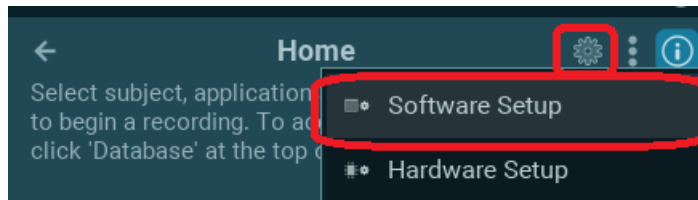
### Step 1: Creating a Local External Database Location (optional)

Create an external database location if your local disk (C: drive) does not have enough space to store your existing database.

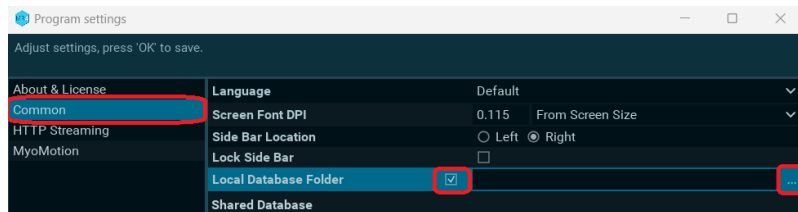
- a Create a new folder on a different hard drive to save data. E.g., in your PC's (D:) Drive. Name the folder something you will remember, like "Noraxon MR external database."

Note: This External Location cannot be located on a shared drive or any other drive accessible from other locations.

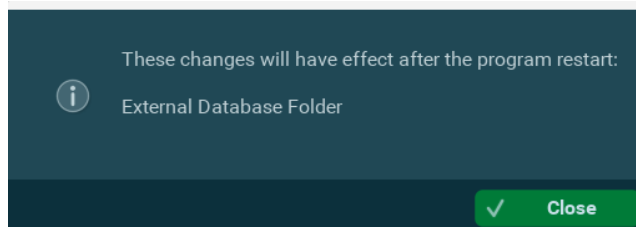
- b At the top-right of the HOME tab, click the gear icon , then select **Software Setup**.



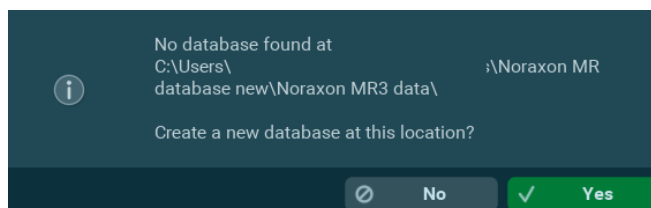
- c In the Common settings, check the box that says, "Local Database Folder," then select the ellipsis (...) on the right to select a folder to save to.



- d When the file directory appears, navigate to the folder created in step a and choose **Select Folder**.

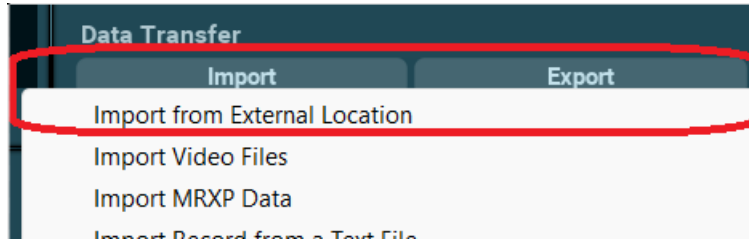


Select "Yes" to create a new database at this location. A backup location will be created after the software automatically restarts.



## Step 2: Importing data from MR3

- a Open MR4 and navigate to the Database tab. In the Data Transfer section, select *Import >> Import from External Location*.

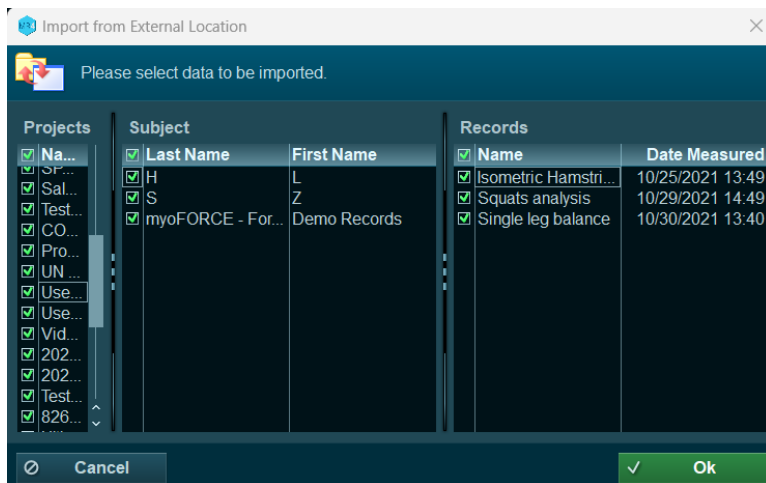


- b Select the folder to import data from.

*Note: Do not attempt to navigate further into the subfolders past the "Noraxon MR3 data" or "Noraxon MR data" folder as this will result in an error message.*

- c Select all Projects, Subjects, and Records to Import, then click "Ok".

*Note: The import process may take a long time if you have a large database.*



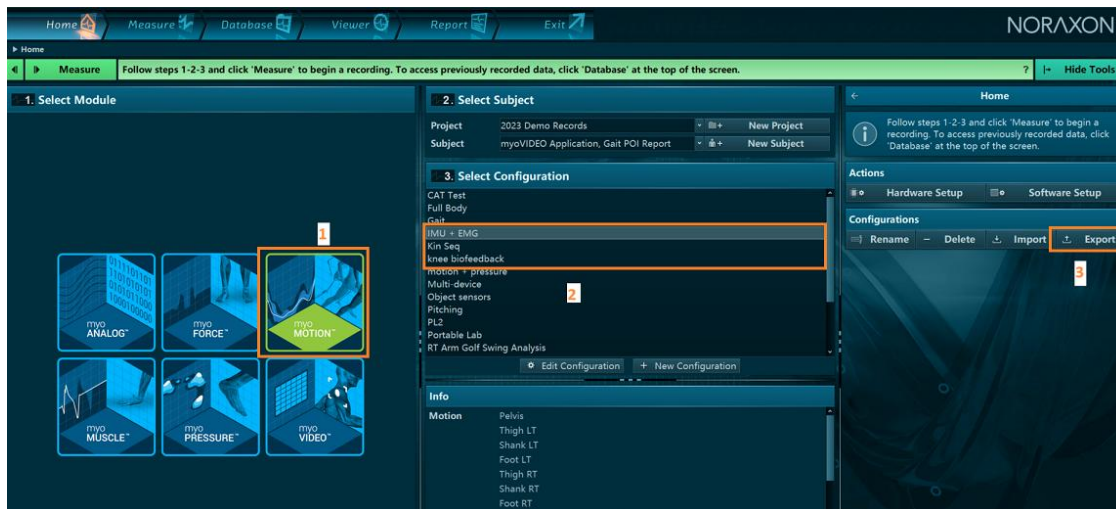
## Configurations/Protocols Transfer

Configurations from MR3 can be imported as new Protocols with your specified measurement settings in MR4.

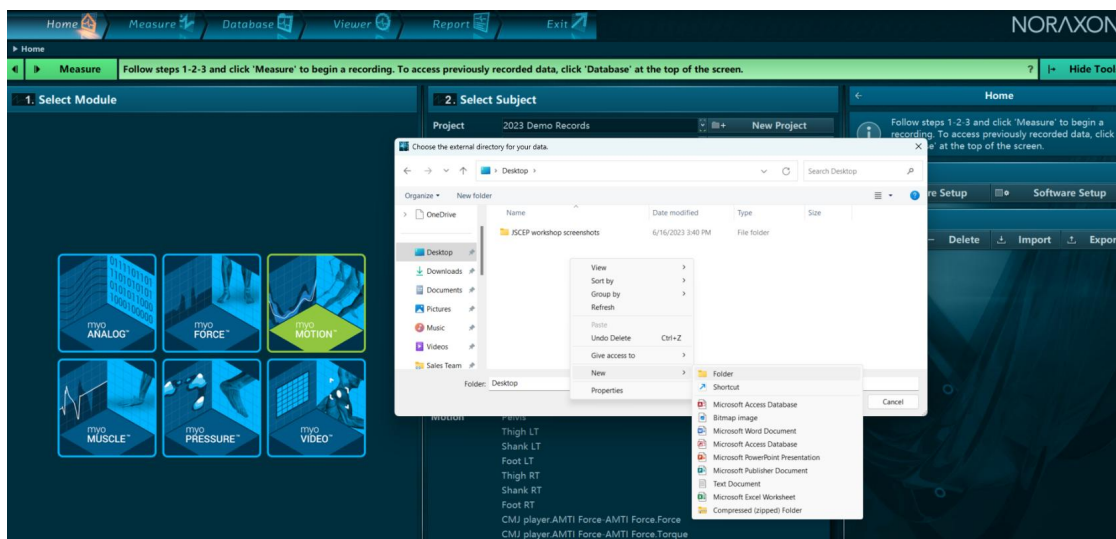
### Step 1a: Exporting configurations from MR3

Open MR3 to the HOME tab and follow these instructions:

- Select the module you would like to transfer configurations from on the left.
- Select the configurations you would like to export from the list of configurations. (It is possible to select multiple by holding down CTRL + click.)
- Select Export from the Configurations action menu.



- Choose a storage location (e.g., on a flash drive) and create a New folder to store your configurations inside of.

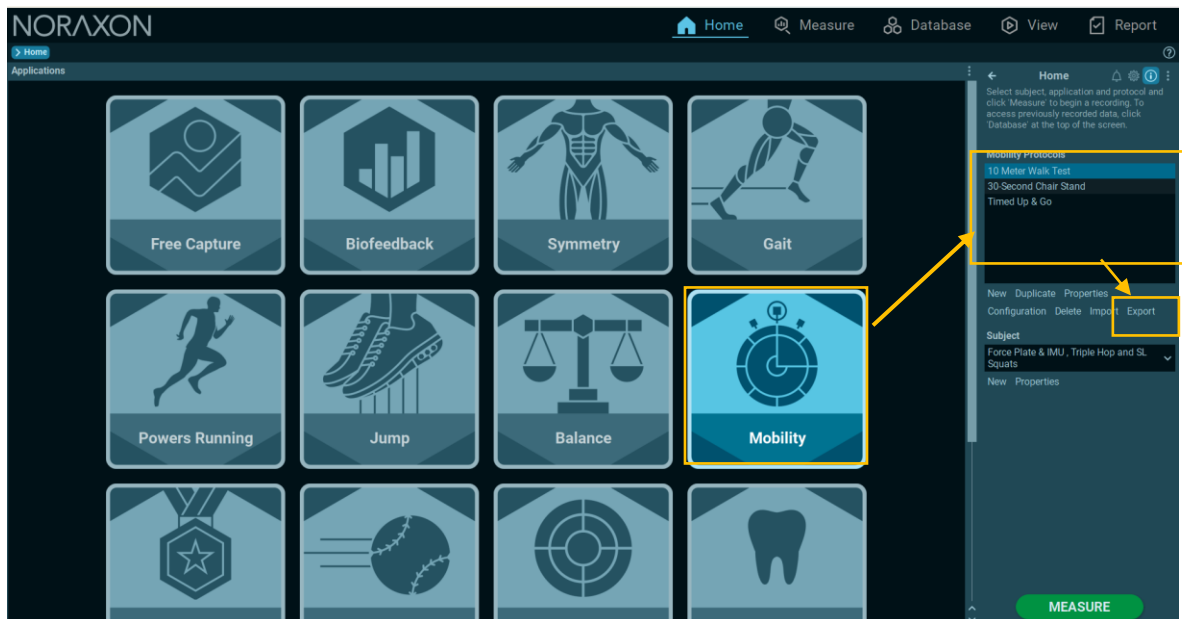


- e. Select your new folder to store your configurations there.
- f. Repeat steps a-c for other modules. Configurations in different modules will need to be exported separately. Configurations can be stored in the same new folder created in step d.

## Step 1b: Exporting protocols from MR4

Open MR4 to the HOME tab and follow these instructions:

- a. Select the application you would like to transfer configurations from on the left.
- b. Select the protocols you would like to export from the list of configurations. (It is possible to select multiple by holding down CTRL + click.)
- c. Select Export from the Protocols action menu.



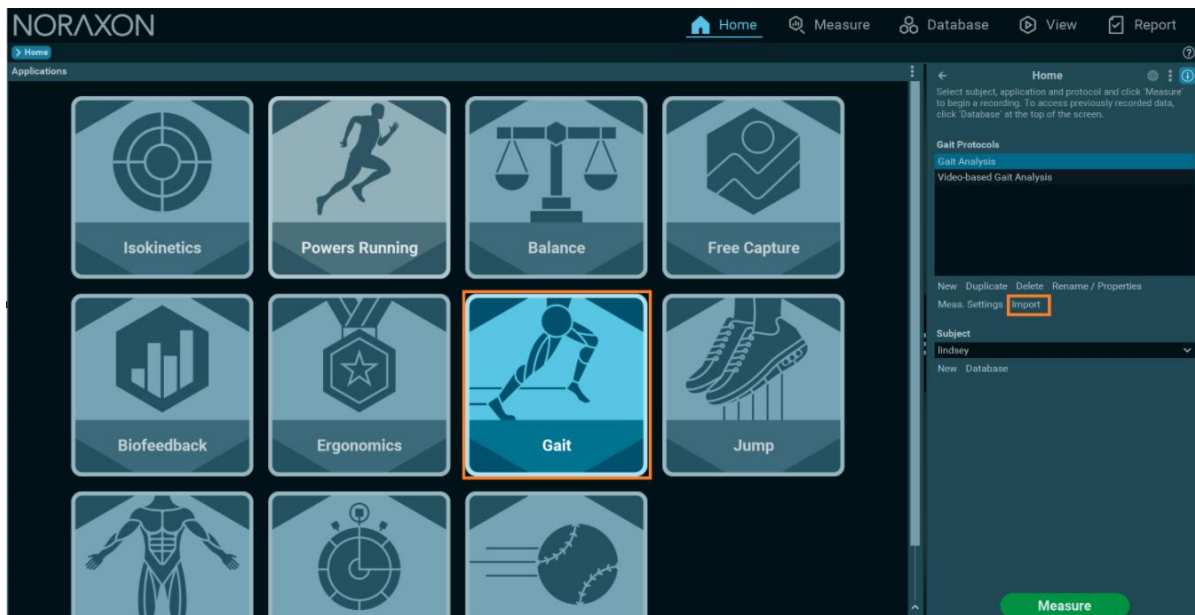
- d. Choose a storage location (e.g., on a flash drive) and create a New folder to store your configurations inside of.
- e. Select your new folder to store your configurations there.

f. Repeat steps a-c for other applications. Protocols in different modules will need to be exported separately. Configurations can be stored in the same new folder created in step d.

## Step 2: Importing configurations as Protocols into MR4

Open MR4 to the HOME tab and follow these instructions:

- a. Select the Application you would like to import protocols into on the left (e.g., Gait), then select Import from the Protocols action menu.



b. Select the folder you stored your MR3 configurations to in the previous step.

*Note: Do not attempt to navigate further into the subfolders past the "Noraxon MR3 data" folder as this will result in an error message.*

c. Select the configurations you want to import as new Protocols in that application.

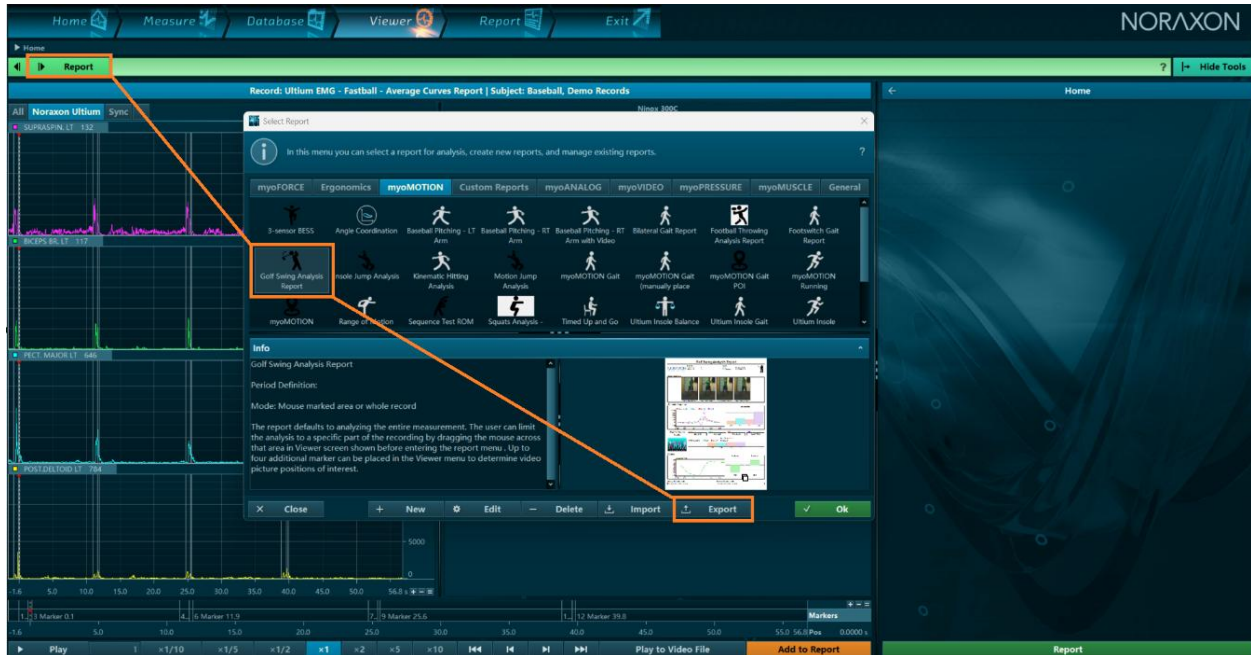
d. Repeat steps a-c for other applications/protocols.

## Custom Reports Transfer

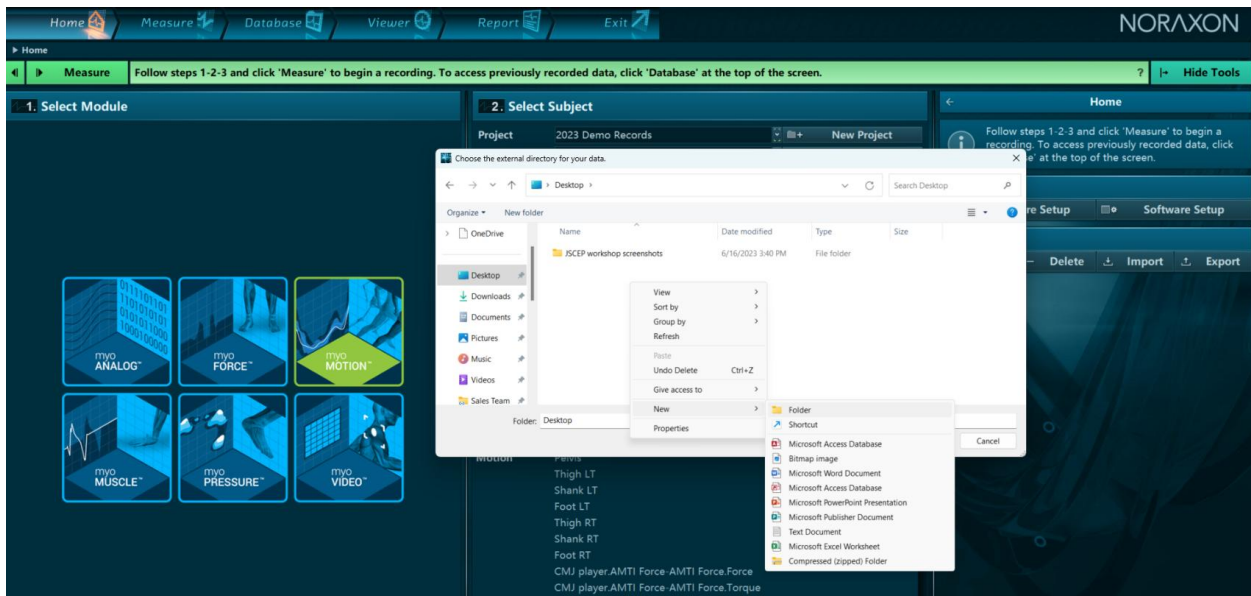
### Step 1: Exporting Custom Reports from MR3

Open MR3 to the DATABASE tab and follow these instructions:

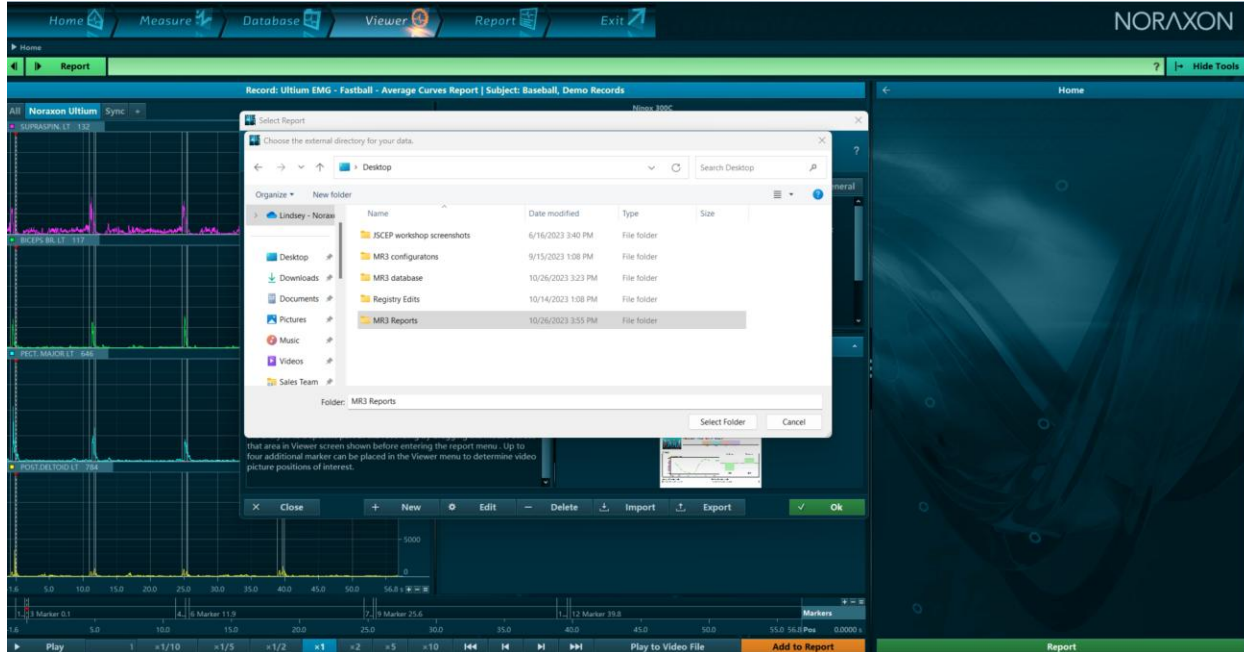
- Open any record to the VIEWER tab, then select **Report** to go to the *Report Selection Menu*.
- Select the custom report to export from the menu, then select Export on the bottom toolbar.  
*Note: To select multiple reports at once, hold down the CTRL key.*



- Choose a storage location and create a New folder to store your reports inside of.



d. Select your new folder to store your reports there.



e. Repeat steps a-b for custom reports located in other tabs within the *Report Selection Menu*.

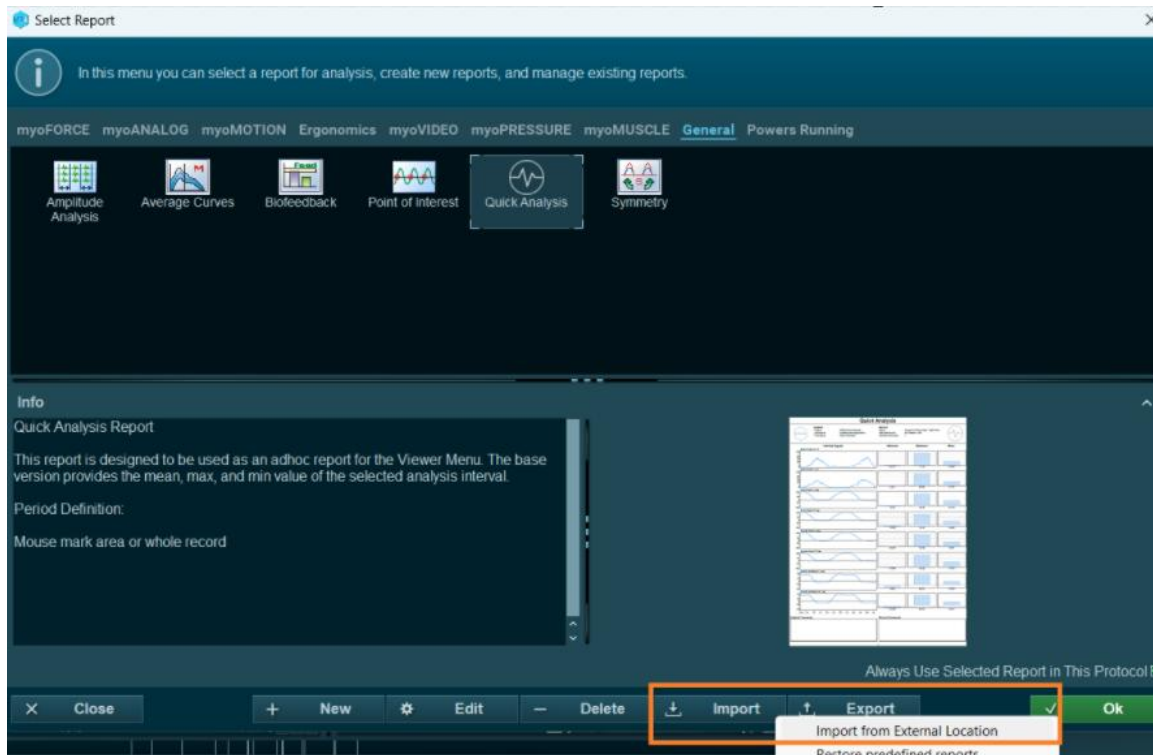
## Step 2: Importing Custom Reports into MR4

a. From the HOME tab, select any protocol under “Free Capture”

b. Navigate to the DATABASE tab and open any record to the VIEWER by double-clicking.

c. Select *Import >> Import from External Location*, then select the folder you saved your custom reports to in Step 1. **If you are importing data from another version of MR4 on the same PC, import from the following location: C:\Program Files\Noraxon\MR 4.0**

*Note: Do not attempt to navigate further into the subfolders to import as this will result in an error message.*



- c. In the new dialog, select the report(s) to import. Multiple Reports can be selected by holding down CTRL.

