

SPINAL COLUMN ANALYSIS

Objective Documentation of Posture, Form and Mobility

The zebris dynamic and static measuring systems allows 3-dimensional spinal column and back measurements.

Functional and morphological changes in the spinal column and pelvis are often related to posture and joint mobility. Assessment of these parameters is now possible before treatment and can be documented over time.

The measuring systems enable objective assessment of the individual's static and mobility conditions in 3-dimensional space.

By using the "dual pointer" sensor, defined reference points of the skeleton are palpated and are quickly and accurately displayed on the PC.

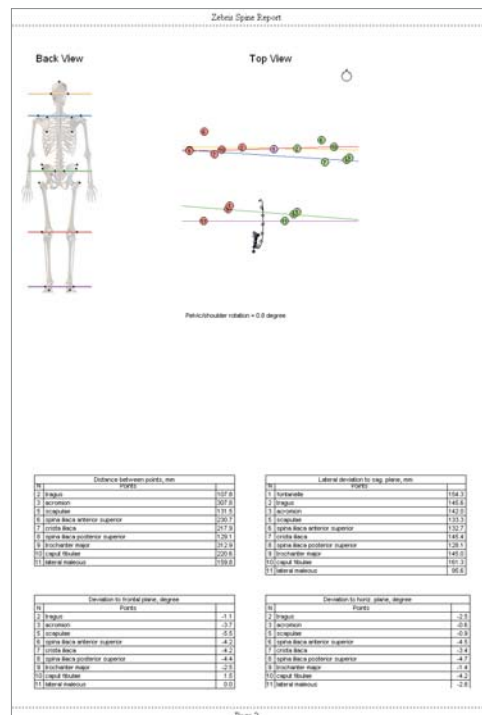
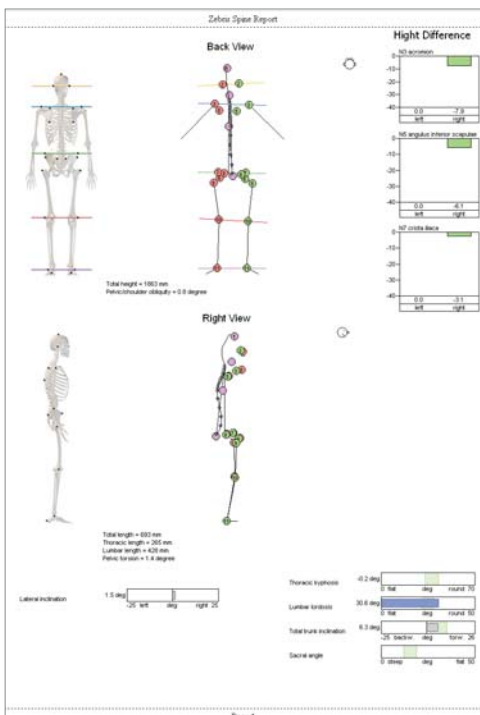
The measurement system instantly provides information about the posture in the sagittal-, frontal- and transversal plane.



Mobility parameters of the patient in trunk flexion, extension and lateral flexion can also be easily acquired.

Documentation of the posture is provided for the patient in an illustrative and informative manner. This patient education feature assists in communicating the current status, and change in posture throughout the treatment period.

- Data acquisition is quick, easy and accurate using the zebris measuring systems based on the principle of the travel time measurement of ultrasonic pulses.
- "WinSpine" program supported by Windows XP operating system
- Tilt and rotation of head, shoulder, pelvic and limb points are clearly displayed.
- Optional: Simultaneous analysis of force distribution with the PDM-S platform



For further information please contact

zebris Medical GmbH
Max-Eyth-Weg 42
88316 Isny im Allgäu

Tel.: 07562 / 9726-0
Fax: 07562 / 9726-50
E-mail: zebris@zebris.de
Internet: www.zebris.de

Accessories



Dual pointer Sensor

with 4 ultrasonic transmitters

Dimensions 315 x 24 x 585 mm (W x H x D)



The Dual pointer Sensor contains a trigger button that controls the recording.