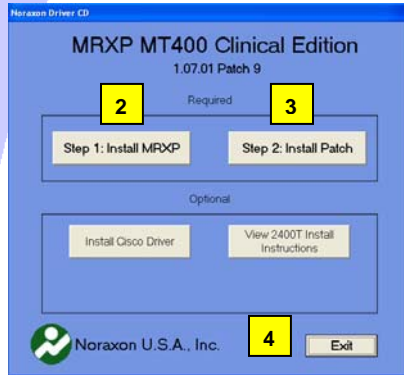


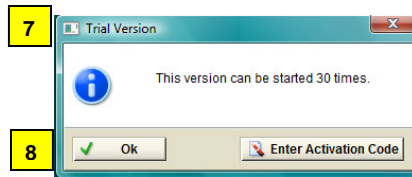
The example below uses MRXP MT400 Clinical Application Protocols Edition and the Frequency/Fatigue Application. These instructions are similar for other MRXP Editions and Applications/Protocols.



- 1) Insert the MyoResearch XP CD
- 2) Install the MyoResearch XP software
- 3) Install the Patch
- 4) Exit the MRXP Menu window and remove the CD.

5) Insert the CD with the MyoResearch XP Application/Protocol

6) Open MyoResearch XP by double-clicking on the MRXP Clinical Applications Icon located on your Desktop

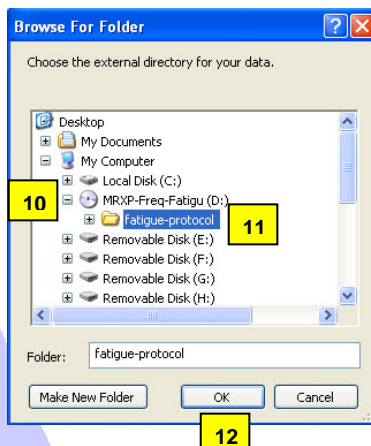


- 7) A pop-up window will request an activation code.
- 8) Click OK on the pop-up window to open MRXP. (You can request the activation code later.)

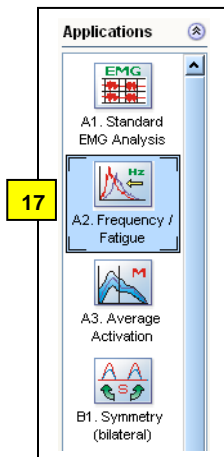
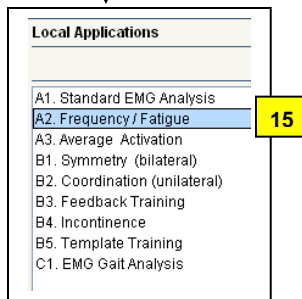
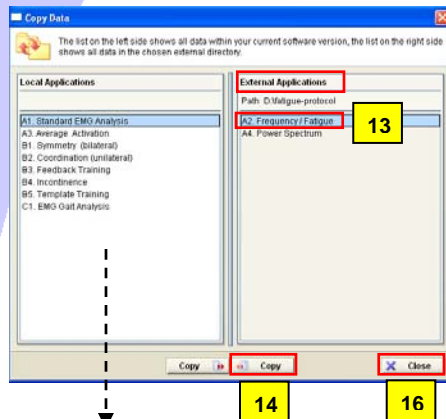
**Note:** You can use the software 30 times before you will need an activation code. The “Trial Version” includes the same features as the activated version. The data collected using the “Trial Version” is still available after activating the software.



9) In the “Applications” menu, click “Copy”



- 10) Navigate to your CD drive
- 11) Click on the folder “fatigue-protocol”
- 12) Click OK



13) In the “External Applications” panel, click on the “Frequency/Fatigue” Application

14) Click “Copy” (with arrow pointing left)

15) Verify the “Frequency/Fatigue” Application appears under “Local Applications”

16) Click “Close”

17) Verify that the “Frequency/Fatigue” Application is available in the “Choice of Protocol” window.

The “Frequency/Fatigue” Application can now be used to measure data.