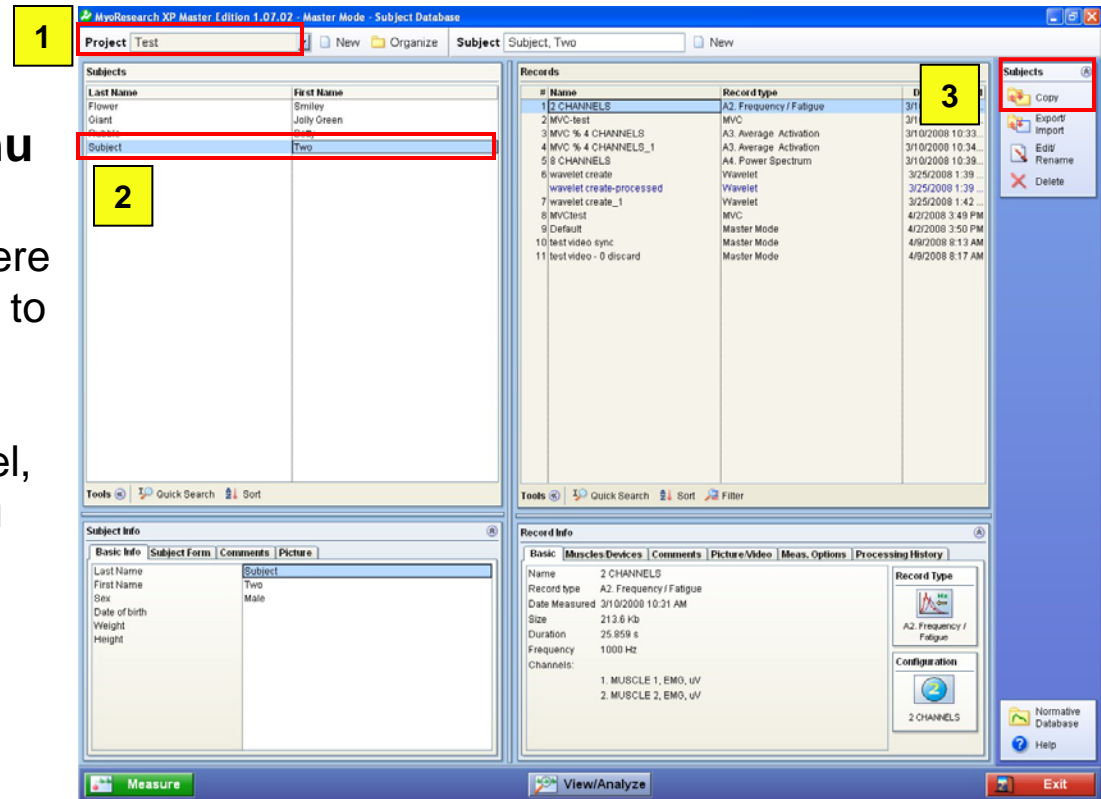


How to Backup (Copy) Subjects in MRXP

Select Subject to Copy

In the Database Menu

- 1) Select the Project where the subjects you want to copy are located.
- 2) In the “Subjects” Panel, Click on a subject you want to Backup/Copy.
- 3) Select Copy in the “Subjects” Menu



The screenshot displays the MyoResearch XP Master Edition 1.07.02 - Master Mode - Subject Database interface. The interface is divided into several panels:

- Panel 1 (Top Left):** The 'Project' dropdown menu is set to 'Test'.
- Panel 2 (Middle Left):** The 'Subjects' table is visible, with the 'Subject' row selected.
- Panel 3 (Top Right):** The 'Records' table is visible, with the '2 CHANNELS' record selected.
- Panel 4 (Right Side):** A context menu is open over the 'Subjects' table, with the 'Copy' option highlighted.

The bottom of the screen features three buttons: 'Measure', 'View/Analyze', and 'Exit'.

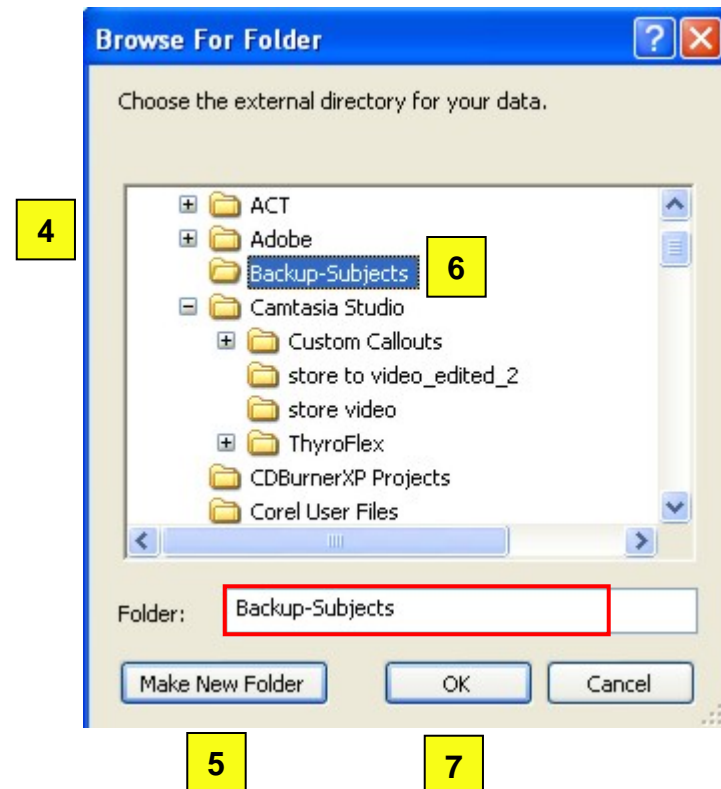
Locate the External Directory where you want to Save your data

4) Locate the directory where you want to save your data.

5) If desired, create a new folder.

6) Click on the folder so it is highlighted.

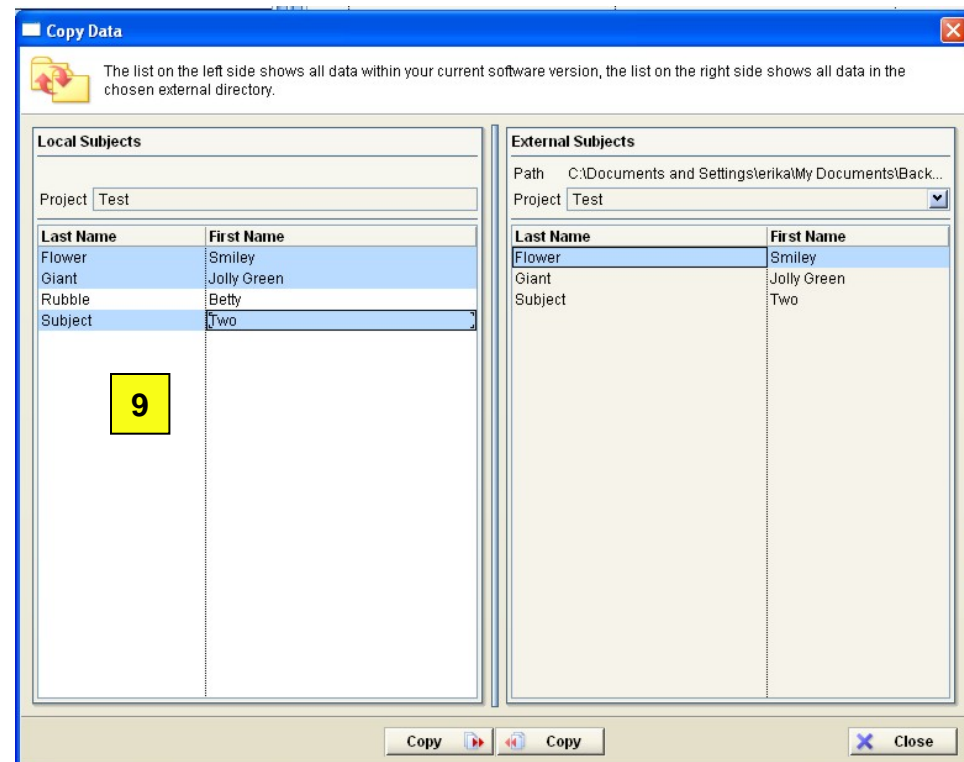
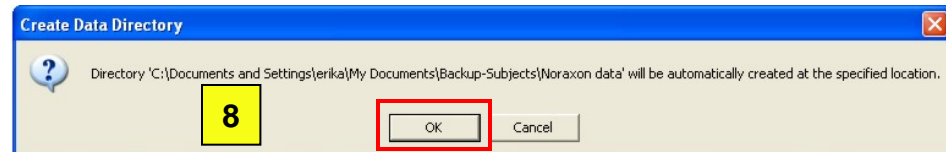
7) Click OK.



8) If there isn't already a folder called "Noraxon Data" in the location you selected in step #6, MRXP will display this message indicating it is creating one. Click OK

9) In the "Local Subjects" panel (Subjects that are inside MRXP), highlight the subjects you want to backup/copy

Note: Press & hold "CTRL", then click the Subject's name if you want to select several subjects.



Backup (Copy) Subjects

- 10) Click the Copy button (The one with the arrow pointing towards the External Subjects panel.)
- 11) When the selected Subjects appear in the “External Subjects” panel, the process is complete.
- 12) Click close to return to the Database Menu.

