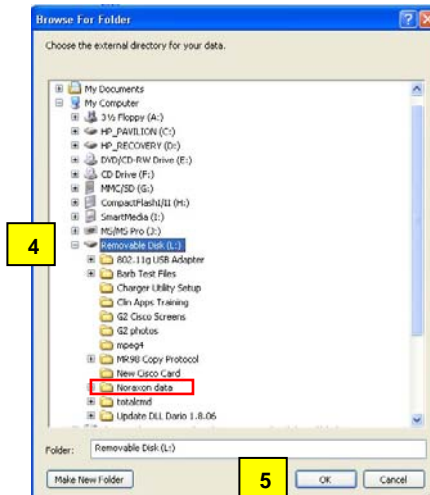


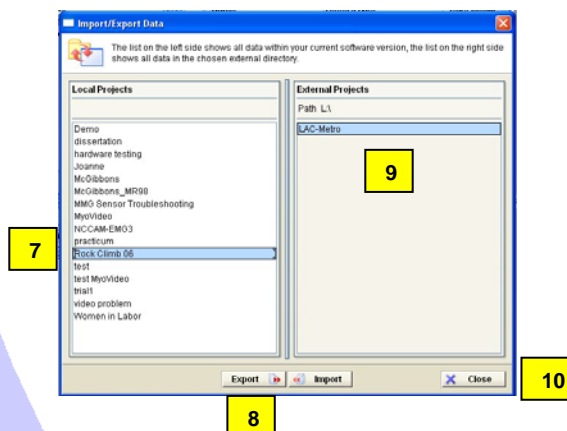
- 1) Open MyoResearch XP and go to the Database screen.
- 2) Click **Organize**
- 3) In the Organize Projects screen, click **Copy** and then select **External Projects**.



- 4) Select the location where you want to save your data.
- 5) Click **OK**.

NOTE: The data is saved in a folder called "Noraxon Data". If you do not have a "Noraxon Data" folder in the location you selected, MRXP will automatically create a "Noraxon Data" folder.

In the example above, a "Noraxon Data" folder was previously created, which means you have some MRXP data already in that folder and this new data will be added to the data inside the "Noraxon Data" folder. You will not lose the data that you saved previously



- 7) Select the desired project in the Local Projects panel.
- 8) Click **Export**.
- 9) Verify that the selected project appears in the External Projects Panel.
- 10) Click **Close**.