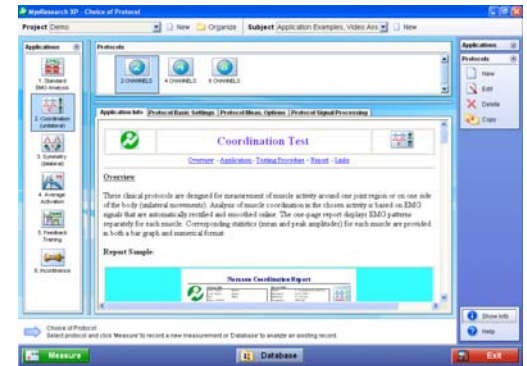


Detailed Menu & Features Descriptions

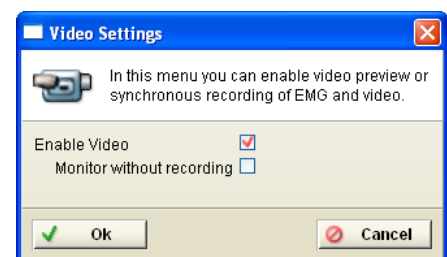
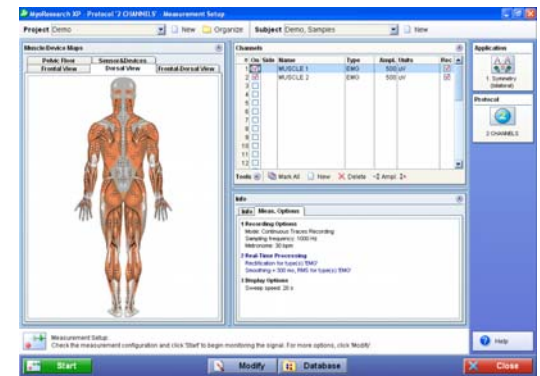
Protocol Entrance Screen

- Gain access to six clinical application protocol groups
- Comprehensive online info panel with protocol descriptions
- Delete, duplicate, copy, edit functionality for protocols
- Protocol wizard line that guides the user through all steps needed to perform a protocol



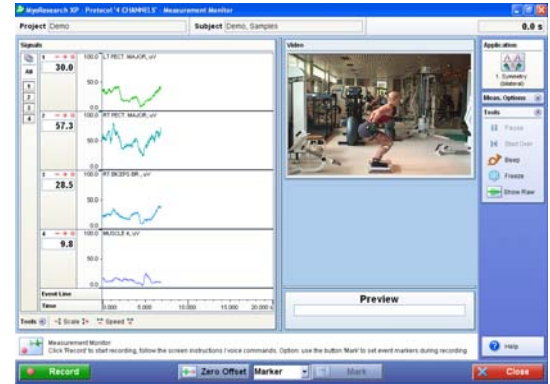
Measurement Setup Menu

- Anatomical muscle maps and sensor/device maps allows quick selection or change of measurement channels
- Free selection of channel numbers and type (up to 32, depending on the hardware used)
- Modify functionality to access measurement setup options, depending on protocol contents:
 - Biofeedback
 - Multi-activity (incontinence)
 - Real-time processing
- Metronome/ beeper function to control and mark movements and phases
- Trigger/ Retrigger, Start/ Stop functions
- Display options with selectable channel color, background grid, zero line, filled curves mode and sweep speed
- Video synchronization and recording by DV camera via Fire-Wire or USB Web CAM



Measurement Menu

- Unlimited monitoring of data in real-time
- Unlimited recording of data within the limitations of hard disk capacity
- Global or channel specific zero line calibration
- Selectable channel zoom functionality (with full screen display)
- Direct access to amplitude scaling and trace speed
- Manual marker function with naming possibility
- Pause and freeze function for signal traces
- Several display layout arrangements for trace, video and feedback windows



Signal Processing Sub Menu

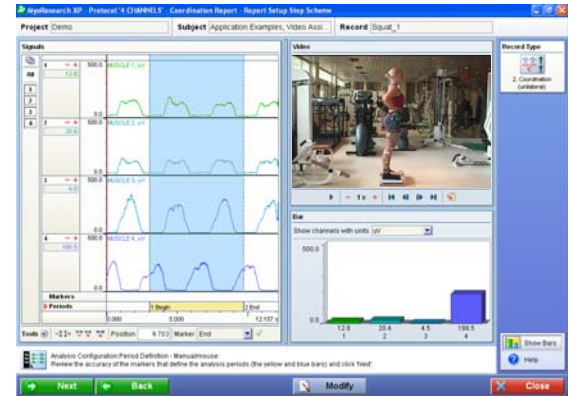
This step will be skipped in some protocols, due to real time processing!
 Overlays only in raw data recording protocols!

- Automatic post hoc processing
- Modify function to adjust:
 - full wave rectification
 - smoothing (RMS, Movag)
 - digital filtering (FIR, IIR)
 - amplitude normalization (only Average Activation)
 - eliminates ECG signals but does not affect the true EMG characteristics



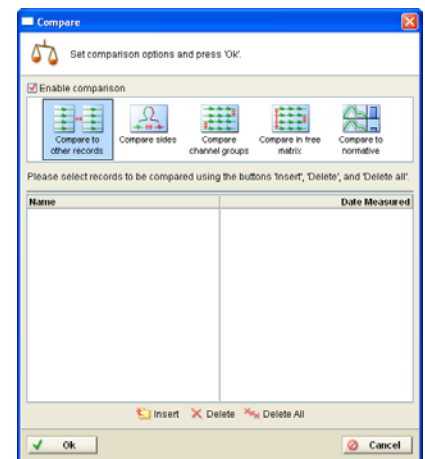
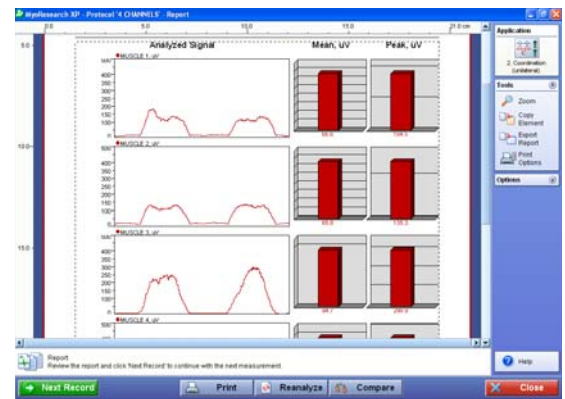
Period Definition

- Mouse based or marker based definition of analysis periods
- Modify function to adjust:
 - Mouse definition mode
 - Marker definition modes
- Delete, rename, and edit function for all database entries

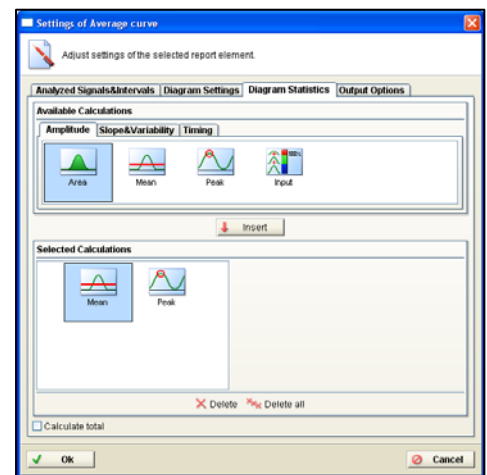
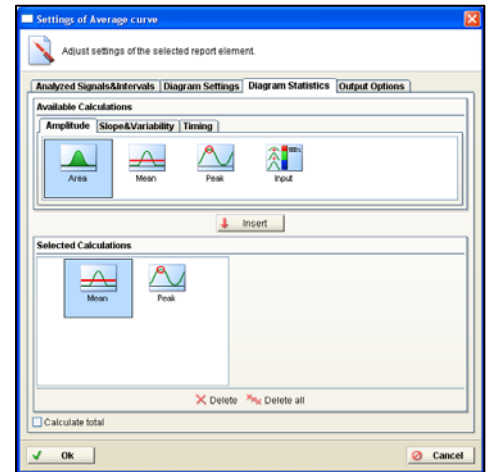


Analysis Report

- One to two-page reports with zoom capability
- Export of the whole report in HTML format
- Direct copy function of analysis findings to the clipboard, paste function for data or graphs to any other Windows application (Excel, Word, Math Cad, etc.)
- Direct transfer of findings to the normative database records
- Post hoc comparison of analysis findings to other channels records or normative data
- Flexible print function, batch printing via Windows printer settings
- Possible to load another report for the given data set

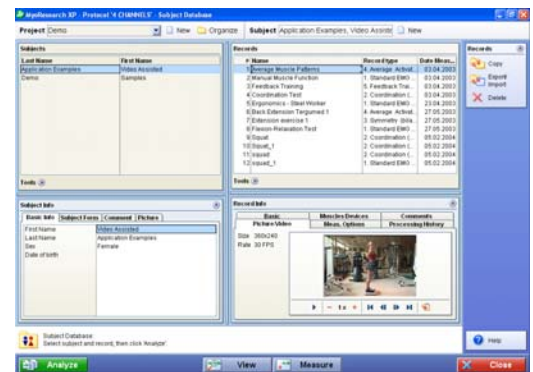


- Direct adjustment of analysis parameter by mouse double click, which opens a comprehensive setup menu for the given analysis frame:
 - Restriction to certain channels, activities within the multi-activity record, raw data, sub phases (in gait cycle)
 - Adjustment of the diagram options, e.g. the type of time normalization for averaged curve diagrams
 - Free choice of amplitude and frequency based analysis parameter
 - Adjustment of the result output options, font type, diagram and table characteristics
- Possible to store modified reports and protocol settings as a new protocol



Database Menu

- Database system with a three level hierarchy system for project, subject and record information
- Delete, rename, and edit function for all database entries
- Copy and backup function for all data
- Export functions include: ASCII, Binary, C3D, or other formats by request
- Import functions include: previous Noraxon formats, ASCII files, major motion capture systems, C3D and other formats by request.
- Possible to repeat/reload a former report analysis



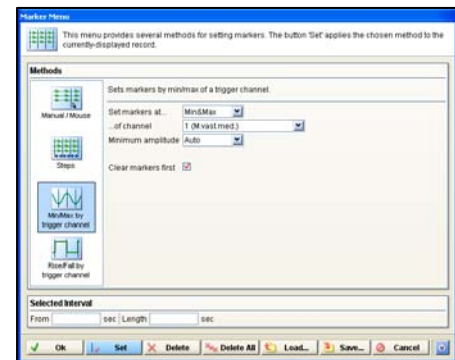
Menu Record Viewer

- Complete mouse support for all operations
- Scaling and zoom functionality for all channels
- Graphical channel and time periods overlay
- Mouse based marker placement and correction
- Additional histogram display for signal data at cursor position
- Replay, slow motion and single picture shot for synchronized video sequences
- Hard copy print option for each record viewer image
- Marked and signal processed signal portions can be stored as a new record



Marker Sub Menu

- Several routines to place and/or edit analysis markers
- Angle over TTL signal based auto marker functions
- Load and store functions for marker sets



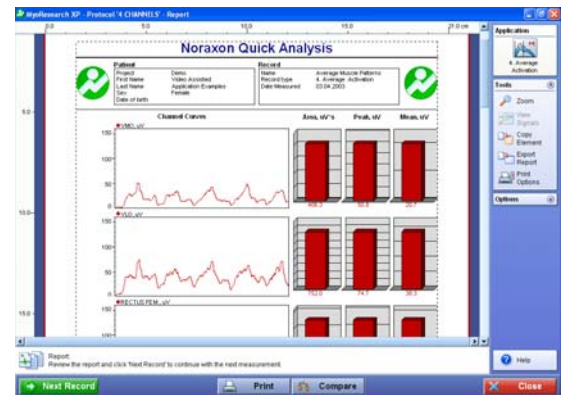
Edit Sub Menu

- For the physical manipulation of data records (non-restorable edit operations)
- Import/ export functions for MyoResearch channels
- Import/ export functions for signal portions
- Zero line offset correction
- Delete function for all channels and signal portions
- Manual correction of single record data (e.g. spike correction)
- Marked and signal processed intervals can be stored as new records



Quick Analysis Sub Menu

- Instant analysis report with selectable parameters
- Recognizes marked signal portions
- Recognizes signal overplots and curve superposition
- Configurable to individual needs
- With store, print and export functions (see menu, "Analysis Report")



Hardware Setup Menu

- A/D (board) driver menu with Noraxon USB, Wireless LAN, or Demo driver
- Free choice of channel types, which can be configured and calibrated to any physical unit, with auto offset function and other display options
- Recording of external analog signals through hardware auxiliary input channels at the amplifier or telemetry transmitter
- Video input configuration menu with access to all video devices connected to the PC, audio recording included
- Free choice of video compression: Codec's, incl.: DivX (free Internet Download), MPEG 4 and others.

