

2-FSR Sensor Foot Contact Lead for Noraxon cable and telemetry systems

- 2 small foot switch sensors per foot/side/lead
- Marks Heel strike and Toe off events during gait
- Adjustable sensitivity
- Creates a reliable foot contact signal
- Easy to replace sensors



Product Overview

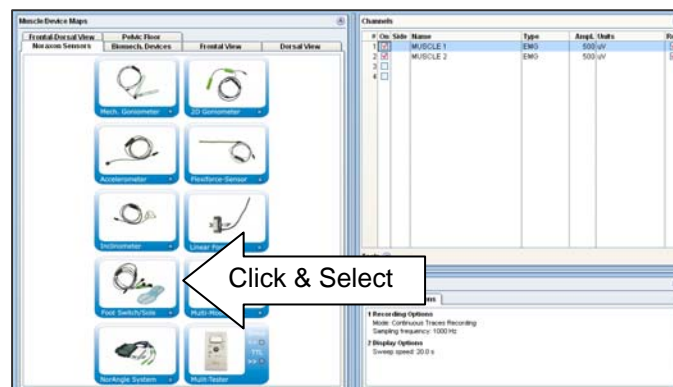
The Inline foot contact sensor lead consists of 2 FSR (force sensitive resistor) switch sensors. They can be mounted on the heel and the toe or metatarsal region. It is designed for quick and easy use in clinical gait analysis. Each lead has a built-in sensitivity switch which allows for the adjustment of the switch threshold for in-shoe measurements. The switch sensor has plug-in functionality for Noraxon cable (1400 series), telemetry (TeleMyo 2400 series) and the *NEW* MyoTrace 400 systems. The FSR sensor consists of a thin circular film pad that is easy to attach.

Bilateral Ground Contact

During walking, each side creates a ground contact on/off signal. Within this scheme, any ground contact increases the signal to high level and swing phase drops the signal back to zero. This established switch scheme can be used to trigger unilateral and bilateral gait phases.



The sensor has a predefined measurement configuration in all the Noraxon software packages and is operational in a few seconds:



MyoResearch XP
sensor selection
screen

Operation Examples

The inline foot switch leads have universal functionality covering easy and quick to use setups for clinical gait screening, running and jump testing. If damage occurs due to heavy impact or shear forces (running/jumping), broken sensors are easily replaced. The special connector allows easy replacement, but keeps the sensor from falling out during testing.



4 possible attachment sites on the bottom of the foot

The most established setup is: heel, metatarsal 1 and 5, toe. Double-sided tape on the back of the sensor assists in positioning it correctly. Additional taping may be required to guarantee a stable position.



Foot Switch System connected to the TeleMyo system

The 2 foot switch leads (one for each side) can be connected to any analog input channel of the amplifier. Noraxon's latest telemetry system, TeleMyo 2400T G2, supports two additional digital input channels, which can operate the foot signals. The benefit is that no EMG channels are used.



B&L Foot Switch Sole

Noraxon's Inline Foot Contact leads are compatible with the well-established foot switch soles manufactured by B&L Engineering CA – U.S.A. This sole has a separation of fore and back foot region. The benefit is the speed of setup and ease of use - a perfect tool for clinicians. The sole can be ordered from Noraxon as an accessory or in place of the single FSR-sensor leads.

Specifications

- FSR Sensor response time ~2 ms
- Output Signal Range 0 to +5 volts
- Sensitivity Adjustment (uncalibrated) .015 to 1.2 kg/cm²
- 2 output levels (foot on/off)
- No Pressure - 0 volts
- Any Sensor activated – 5 volts
- Sensor Diameter .75 in (18.5 mm)
- Detachable sensor lead length: 12 in (31 cm)
- Inline Cable Length: 42 in (~ 1m)